



PTH 1200/1000 HACKERTRUCK



Drum chippers **PTH** Series

*Whatever wood,
the best chips*

GREENLINE

PTH HACKERTRUCK



PTH 1000/820 HACKERTRUCK

HACKERTRUCK

- 1000/820
- 1200/820
- 1000/1000
- 1200/1000
- 1400/1000

The HACKERTRUCK series chippers are mounted on trucks with 3 or 4 axles and are characterised by high power and performance combined with great maneuverability and versatility. In HACKERTRUCK chippers the drive system can use the same engine as the truck in order to eliminate an auxiliary one, so as to save fuel costs and unburden the vehicle. They can be customised with many settings to make them more versatile to all working condition and are therefore appreciated by large contractors who have to move

quickly on many different sites. Thanks to the closed drum and the standard configuration of two blade, as long as the whole drum axis, they produce high quality chips, whatever wood is cut, considerably reducing fuel consumption. The sharp cut through the blades and the large drum's inertia reduce the machine's efforts and stress, thus confirming the well-known solidity of Pezzolato drum chippers.



Big feeding hopper



Compact for transportation



PEZZOLATO, A 360° COMPANY

REALISATION

A continuous R & D program supports Pezzolato's development and manufacturing. Wholly performed in house, own specialised personnel follow every single step up to the delivery of all machines.

COMPONENTS

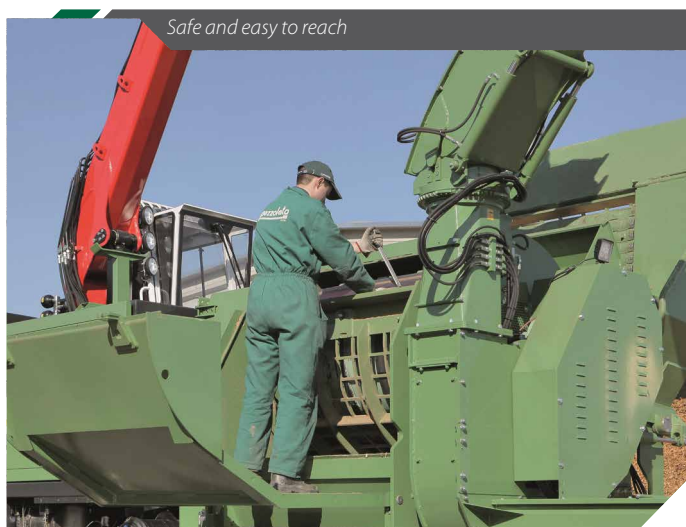
All hydraulic, electric and electronic components mounted on Pezzolato chippers are supplied exclusively by prime-quality European manufacturers.

ASSISTANCE

Technical assistance is provided quickly and performed by own personnel. Specialised Pezzolato technicians are always available to intervene directly or to support local authorised dealers and service facilities.

SPARE PARTS

Thanks to its large stock, Pezzolato is able to send and deliver any spare parts at customers' premises all over the world, within 24/48 hours.



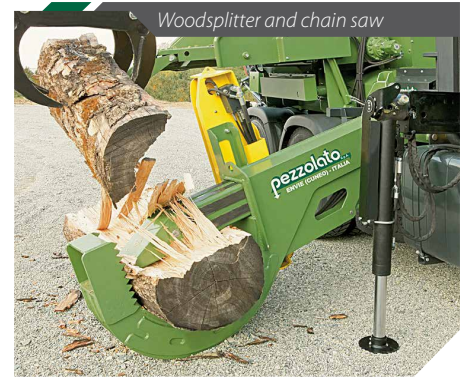
EXTRAS AND CONFIGURATIONS

Pezzolato SpA cares for its customers' needs and listens carefully to the machine end-users, further being a flexible and versatile company. Pezzolato machines can be customised through a series of extras, i.e.:

- ▼ **Special drum** to produce **extra size chips**: it improves production capacity 15% and reduces fuel consumption 16%.
- ▼ **Recovering collecting screws**, under the lower feeding roller, to keep the working area clean.
- ▼ **Sieving grids** for chip calibration with different sizes, easy to replace.
- ▼ **Collapsible counter-blade** secured with shear bolts.
- ▼ Hydraulically folding **hopper extension**, to easily introduce certain types of wood.
- ▼ **Hydraulically bending hopper**, to chip very long wood.
- ▼ **Radio remote control** to manage the chipper's main activities at a distance.
- ▼ **Reversible fans for radiator cleaning**, to clean the motor radiator and save fuel.
- ▼ **Rotating discharge belt**, to obtain better quality chips to replace or in combination with the exhaust fan.
- ▼ **C-shaped woodsplitter** with or without chain saw
- ▼ **Forestry cranes**, with or without cabin, in customised configuration.
- ▼ **LCD color Display** and inspection camera.
- ▼ **The transmission group** transfers the truck power to the chipper with maximum torque of 2500 Nm.
- ▼ **Radiator** for the coolant **increased** to reduce overheating of the motor and positioned externally to allow for quick cleaning while working in a stationary position.
- ▼ **Reduced track** improves handling characteristics, allowing possibility to travel those forest tracks not normally accessible by vehicles of this type
- ▼ **Two-speed fan** depending on the speed chosen it can increase the distance at which chips is ejected or save power from the engine reducing fuel consumption.
- ▼ **Vertical feeding rollers** hydraulic drive to increase the aggressiveness of the machine especially when feeding with prunings.
- ▼ **Black-box control** to capture data on site and transfer directly to a central information point.
- ▼ **Supplementary tube** to eject the chips in front of the cab of the truck in limited spaces.
- ▼ **Hygrometer** to continuously measure the humidity of the wood chips and allow an immediate qualitative assessment of the product
- ▼ **Machine set up on a truck with 4 axles.**
- ▼ **Auxiliary engine** for crane drive.



Interchangeable sieving grid



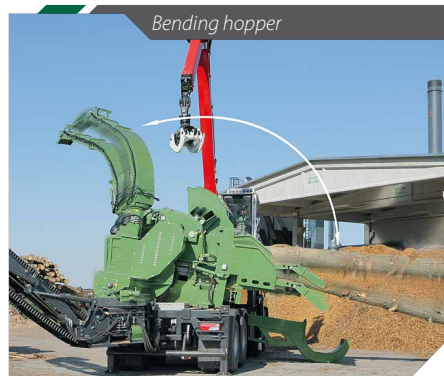
Woodsplitter and chain saw



Extra size chips



Transmission group



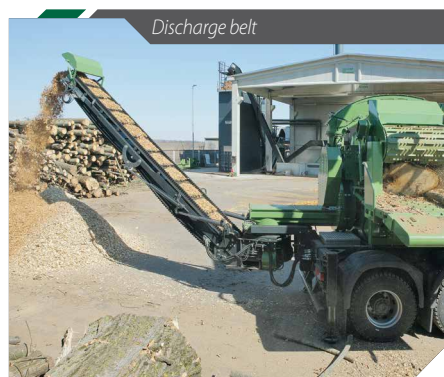
Bending hopper



Vertical feeding rollers



Increased radiator



Discharge belt



Preparation of 4-axle trucks

"PEZZOLATO CHIPS" ARE CERTIFIED

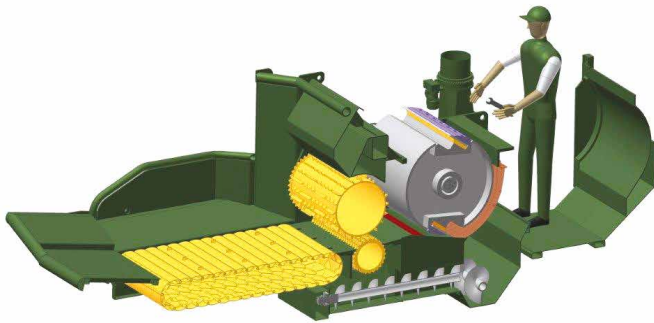


Chips size and features as produced by Pezzolato drum chippers has been analysed and verified by CNR IVALSA (National Research Council of Italy. Trees and Timber Institute).

PEZZOLATO CUTTING TECHNOLOGY GUARANTEES HIGH QUALITY CHIPS

Pezzolato cutting technology consists in a closed drum provided with a customised blade configuration, a counter blade and an interchangeable sieving grid.

Such system, that has traditionally been mounted on industrial stationary chippers, guarantees the production of high quality chips; wood is in fact forced against the blades and is thus transformed into uniformly sized, which pass through the sieving grid immediately after cutting. The closed drum works to keep the chips cutting length fixed and constant.

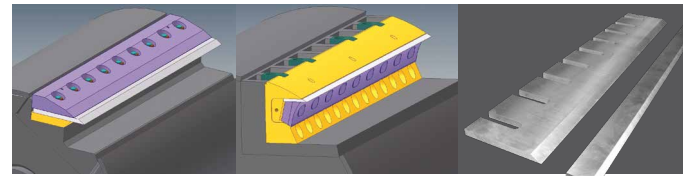


TWO BLADES, MAKE PEZZOLATO

Pezzolato drums can be provided with two different blades:

Standard: the traditional blade that has always been mounted on Pezzolato drum chippers. They are fast and easy to replace, can be sharpened up to 20 times. This configuration is applicable to a special drum for producing extra size chips.

Quick&Smart: provided with a revolutionary fixing system, it is fixed directly to the drum, is easy to handle and quick to replace, it costs 30% less than a traditional blade (to buy and to maintain), it can be sharpened up to 3 times.

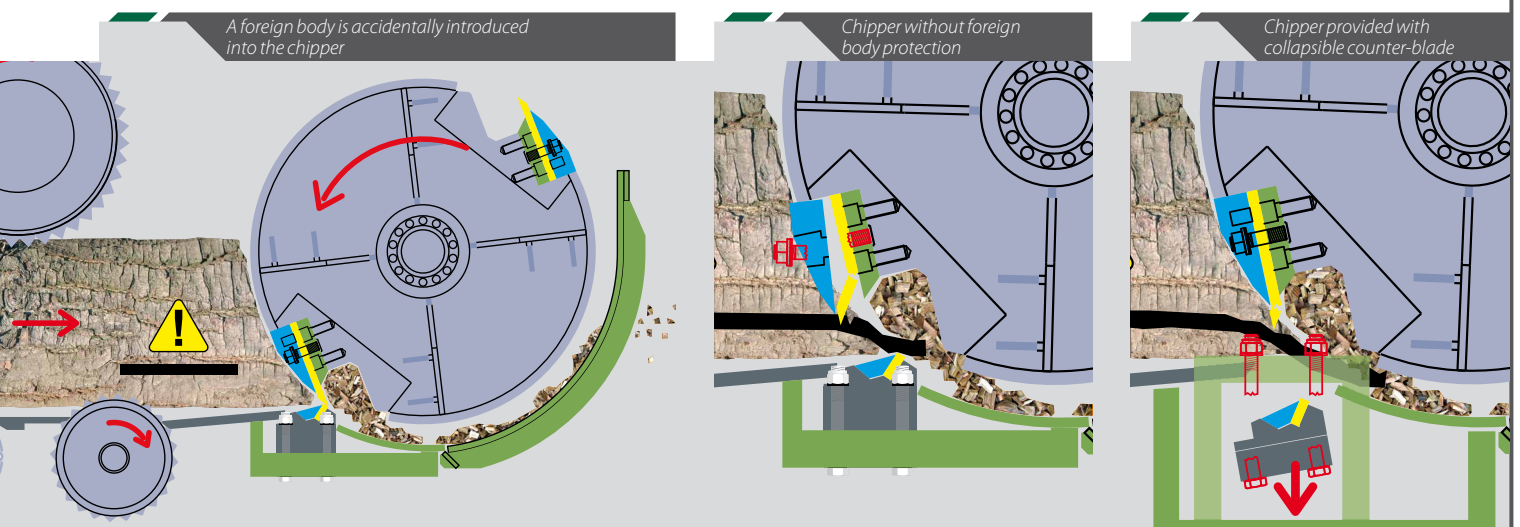


STANDARD BLADE

QUICK&SMART BLADE

PEZZOLATO COLLAPSIBLE COUNTER-BLADE SECURED WITH SHEAR BOLTS

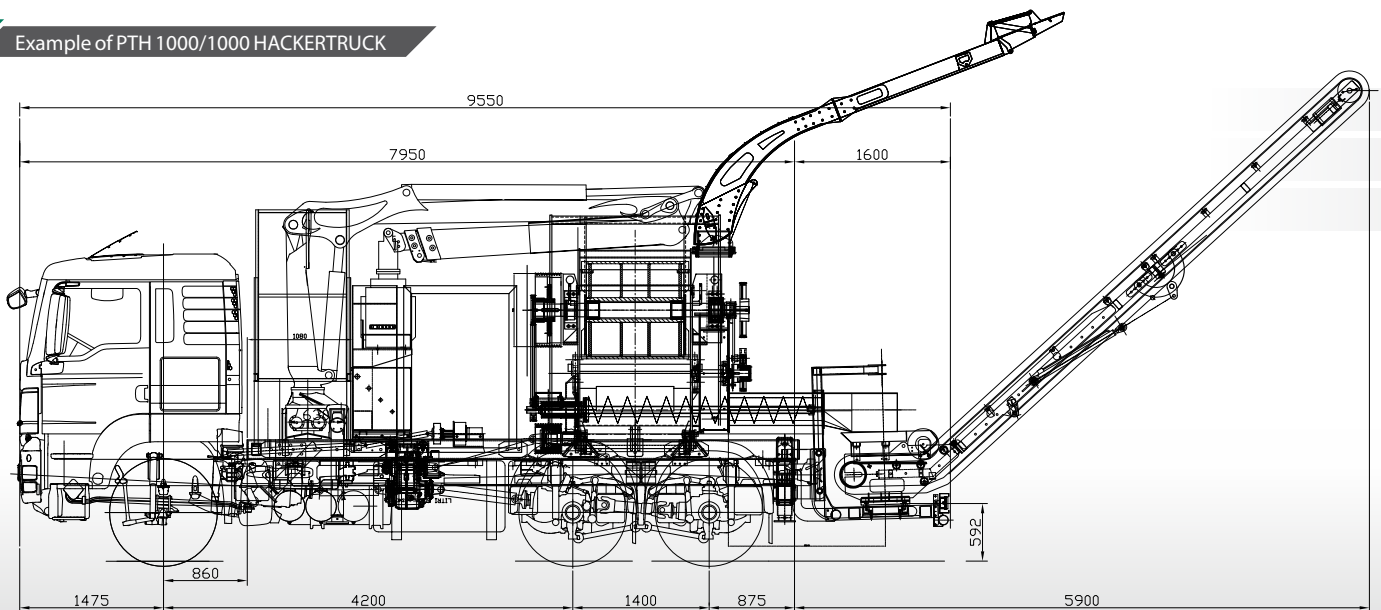
The chipper can be supplied with an award winning collapsible counter-blade mounted on a running slide and secured with adjusted shear bolts. Whenever a hard body is accidentally entered into the chipper, the bolts are sheared and the counter-blade falls down, so that the foreign body exits before causing damages.



TECHNICAL FEATURES		PTH 1000/820	PTH 1200/820	PTH 1000/1000	PTH 1200/1000	PTH 1400/1000
Truck power	Hp/Kw	540/397	540/397	540/397	540/397	620/456
Maximum chipping diameter (soft wood)	mm	560	560	700	700	700
Maximum chipping diameter (hard wood)	mm	450	450	550	550	550
Maximum inlet passage	mm	1000 x 600	1000 x 600	1000 x 700	1200 x 700	1400 x 700
Blades	n°	2	2	2	2	2
Hourly throughput	m ³	100-120	110-130	130-150	150-180	180-200
Drum diameter	mm	820	820	1000	1000	1000
Drum width	mm	1000	1200	1000	1200	1400
Feeding chain width	mm	1000	1200	1000	1200	1400
Feeding chain length	mm	1630	1630	1440	1440	1440
Hopper width *	mm	1905	2100	1780	2190	2190
Lower roller	n°	1	1	2	2	2

* May vary according to the final machine's configuration

Example of PTH 1000/1000 HACKERTRUCK



PTH 1000/1000 HACKERTRUCK equipped on MAN 3-axes truck with a power of 540 Hp equal to 400 Kw, complete with crane for power and adjustable discharge belt.

Dealer

